

CENTRIFUGAL FIRE PUMPS

VERTICAL SHAFT, TURBINE TYPE

Multiple staging enables various capacities
performance in minimum floor space



PV SERIES



Overview

As the heart of water and foam fire-fighting system, the fire pumps supplies the power for moving liquid. It has the characteristic or being very dependable and working intermittently with a flat performance curve.

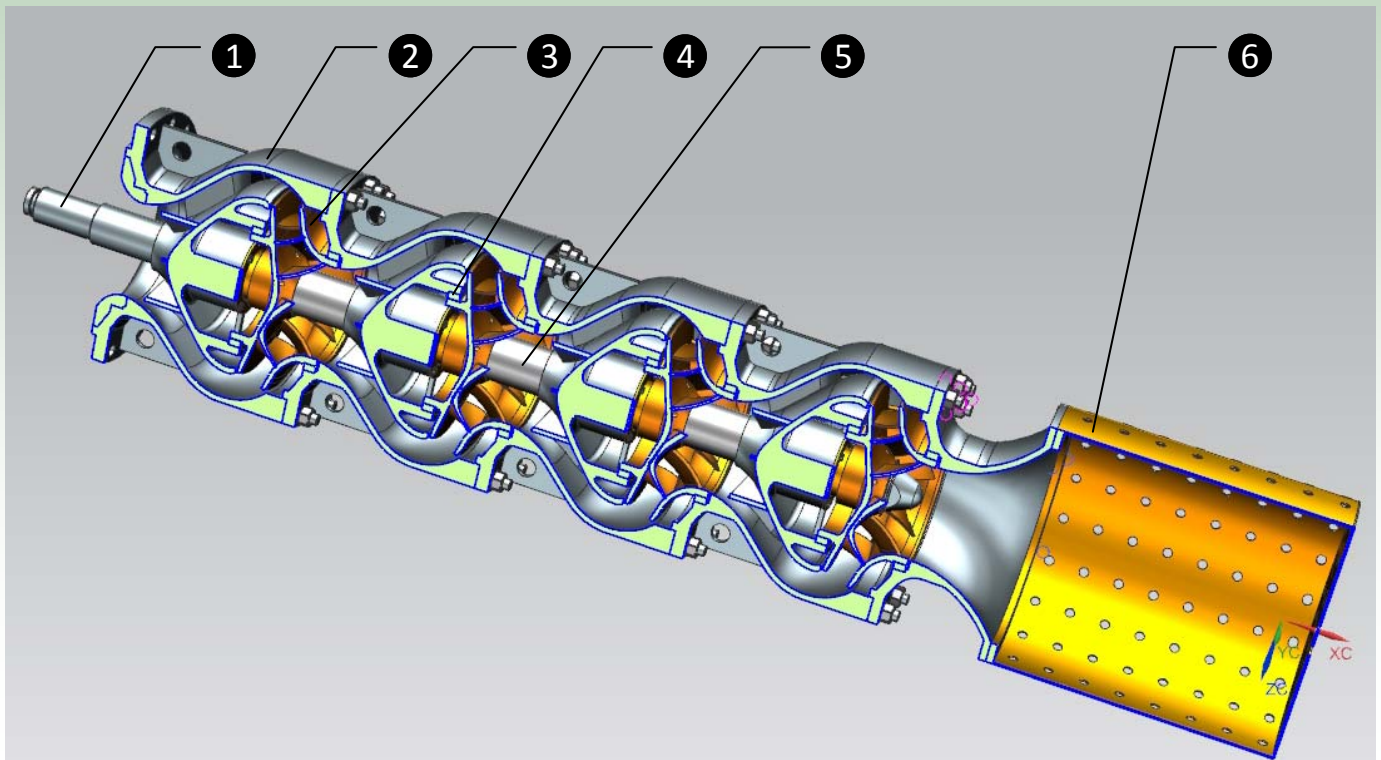
Design Standard

- FM 1312
- NFPA 20
- UL 448
- GB 6245

Feature

- Max. capacities is 33000LPM (8800GPM), UL listed capacities to 18750LPM(5000GPM)
- Max. pressure is 25bar(360psi)
- Special materials for seawater applications
- Diesel engine, electric motor driven and submersible electric motor driven. The maximum driven power is 1,500kW/2010HP

Pump Structure



No.	Part Name	Material
1	Shaft	Monel, Super duplex Stainless steel*
2	Bowl	Ni-Al Bronze, Super Duplex Stainless Steel*, Stainless Steel
3	Impeller	Ni-Al Bronze, Super duplex Stainless Steel*, Stainless Steel
4	Wear ring	Ni-Al Bronze,
5	Interstage sleeve	Stainless Steel, Duplex Stainless Steel*
6	Strainer	Ni-Al Bronze, Stainless Steel

Note:*

Super duplex stainless steel:

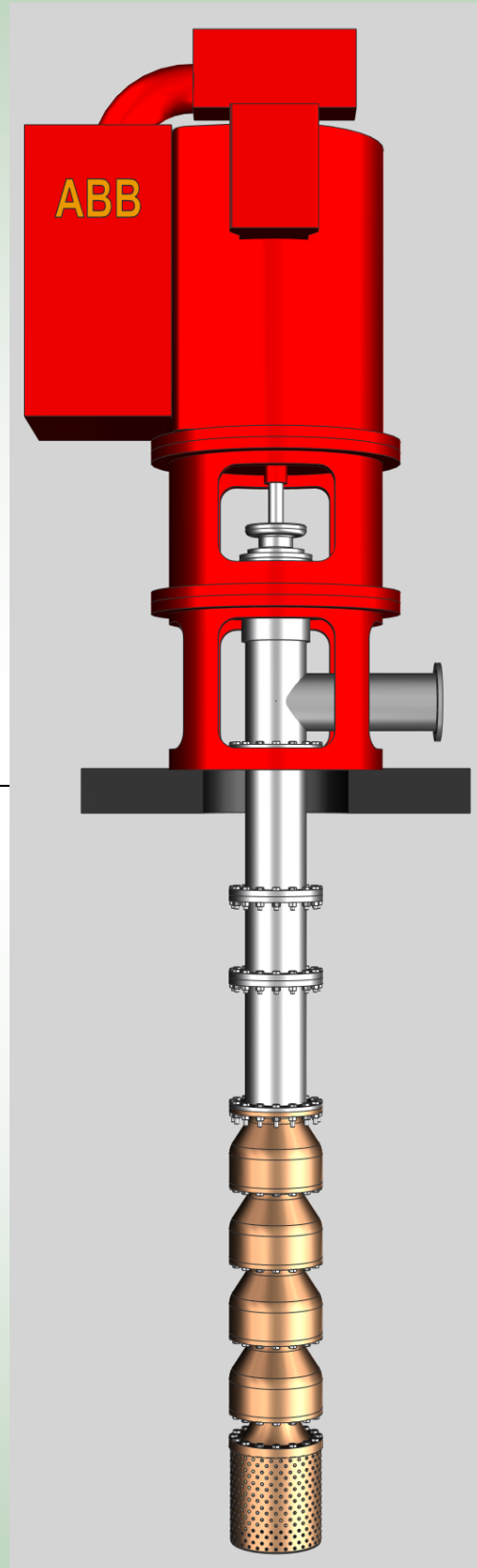
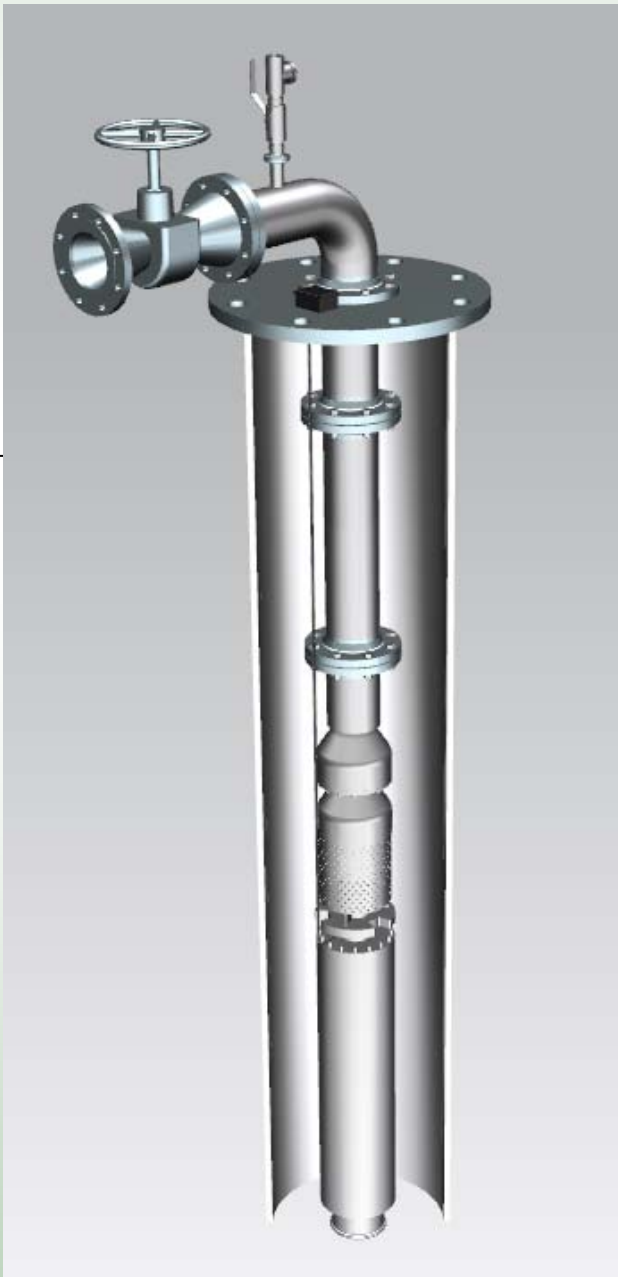
Duplex stainless steel:

Fire Pump Configuration

Electric/Submersible Motor Driven

PDFC fire water pumps are available in electrical motor driven configurations, coupled to motors using a flexible coupling.

The unit is assembled on a compact steel skid, factory aligned and comes with all necessary accessories.



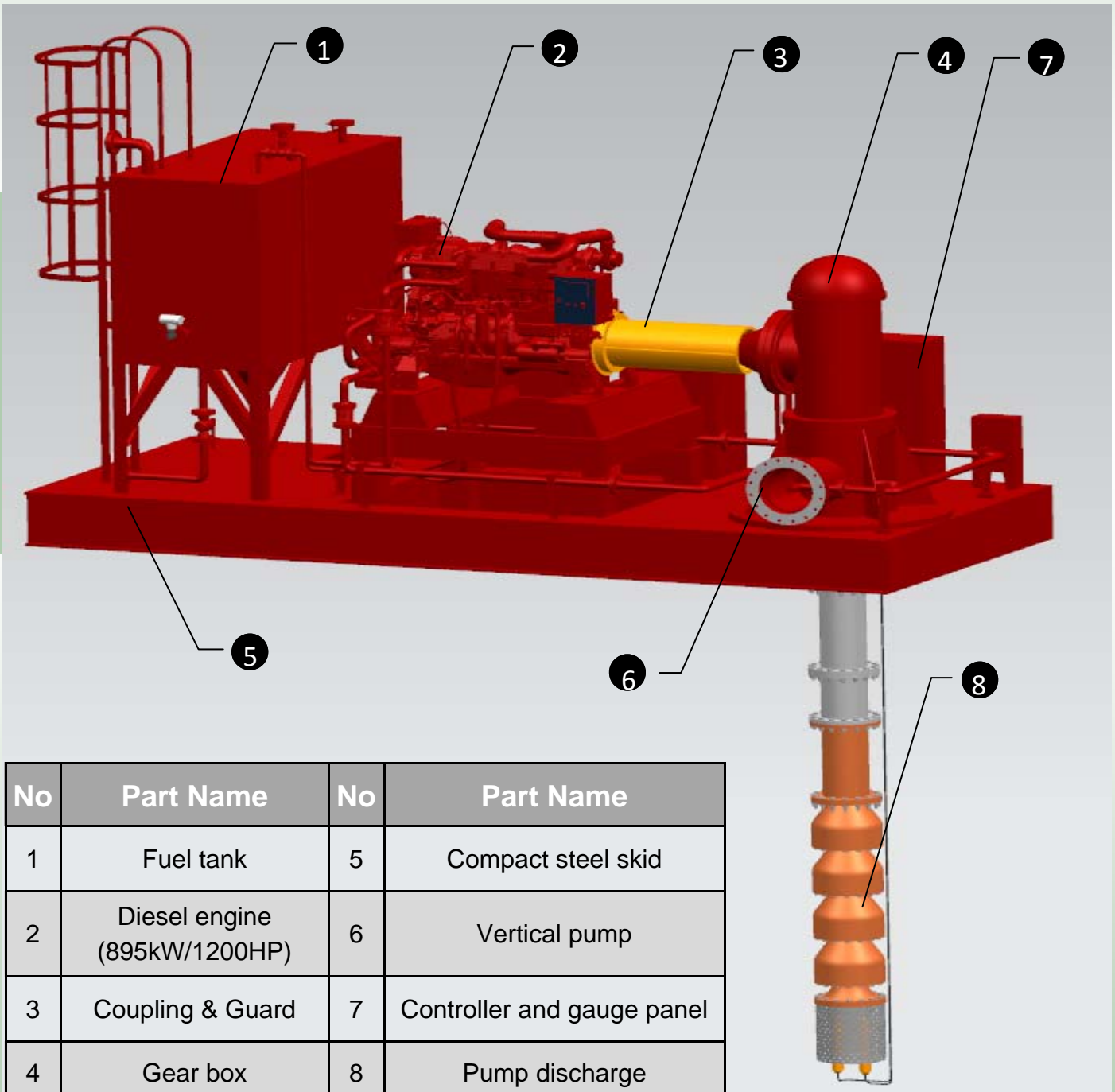
PV SERIES

Fire Pump Configuration

Diesel Engine Driven

PDFC fire water pumps are available in diesel engine driven configuration, and fire pumps are coupled to diesel engines using a flexible coupling.

The unit is assembled on a compact steel skid, factory aligned and comes with water cooled or radiators with fan available, with air cleaner intake, exhaust system, fuel tank, batteries, etc., which are standard equipment.



No	Part Name	No	Part Name
1	Fuel tank	5	Compact steel skid
2	Diesel engine (895kW/1200HP)	6	Vertical pump
3	Coupling & Guard	7	Controller and gauge panel
4	Gear box	8	Pump discharge

PV SERIES

CERTIFICATE OF COMPLIANCE

Certificate Number 20180330-EX27643
Report Reference EX27643-20180329
Issue Date 2018-March-30

Issued to: Shanghai Pudong Special Firefighting Equipment Co Ltd
Room 205, Build 5, No. 398, Shuanglian Road, Qingpu
District
Shanghai
201702 CHINA

This is to certify that representative samples of CENTRIFUGAL FIRE PUMPS, VERTICAL TURBINE
Models: PV170-304, PV185-335, PV200-350, PV225-400,
PV250-400, PV275-430

Have been investigated by UL in accordance with the
Standard(s) indicated on this Certificate.

Standard(s) for Safety: UL448 Standard for for Centrifugal Stationary Pumps for
Fire-Protection Service

Additional Information: See the UL Online Certifications Directory at
www.ul.com/database for additional information

Only those products bearing the UL Certification Mark should be considered as being covered by UL's
Certification and Follow-Up Service.

Look for the UL Certification Mark on the product.



Bruce Mahrenholz, Director North American Certification Program

UL LLC

Any information and documentation involving UL Mark services are provided on behalf of UL LLC (UL) or any authorized licensee of UL. For questions, please
contact a local UL Customer Service Representative at <http://ul.com/aboutul/locations/>



DESCRIPTION

PRODUCT COVERED:

Centrifugal Fire Pumps, Vertical Turbine

USL - Centrifugal Fire Pumps, Vertical Turbine

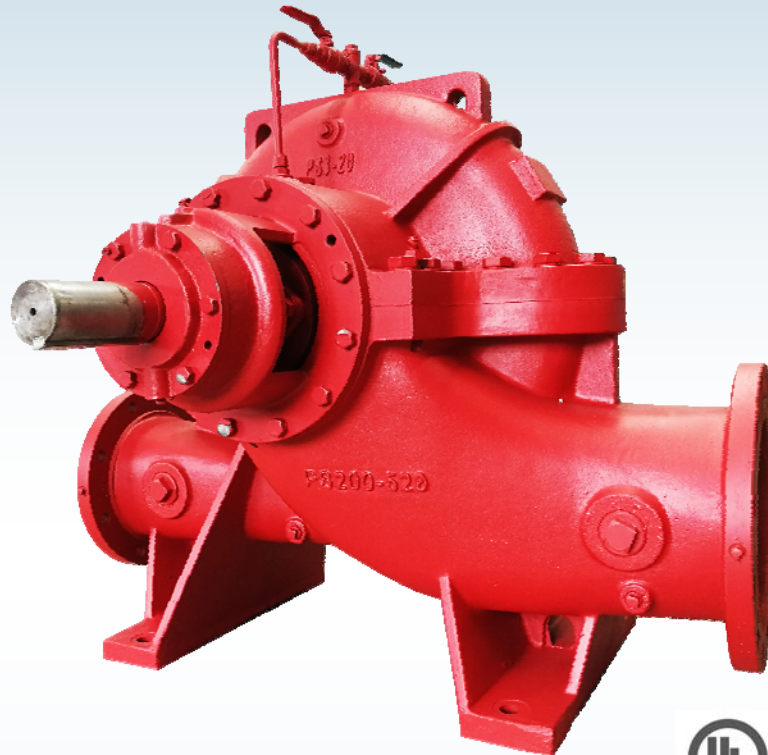
Rated Capacity (gpm)	Model Dsg	Rated Net Pressure Range (psi)	Approx Speed (rpm)	Number of Stages
750	PV170-304	75-85	1480	2
		113-128	1480	3
		150-170	1480	4
		188-255	1480	5 - 6
1000	PV170-304	72-83	1480	2
		108-124	1480	3
		144-165	1480	4
		180-248	1480	5 - 6
1250	PV170-304	69-80	1480	2
		103-121	1480	3
		138-161	1480	4
		172-241	1480	5 - 6
750	PV170-304	109-123	1760	2
		163-184	1760	3
		217-246	1760	4
1000	PV170-304	105-119	1760	2
		157-179	1760	3
		210-238	1760	4
1250	PV170-304	102-116	1760	2
		152-174	1760	3
		203-232	1760	4
1250	PV185-335	80-94	1480	2
		119-140	1480	3
		159-187	1480	4
		199-234	1480	5

Rated Capacity (gpm)	Model Dsg	Rated Net Pressure Range (psi)	Approx Speed (rpm)	Number of Stages
1500	PV185-335	76-90	1480	2
		114-135	1480	3
		152-224	1480	4 - 5
1250	PV185-335	117-135	1760	2
		175-203	1760	3
1500	PV185-335	113-132	1760	2
		170-197	1760	3
1500	PV200-350	90-119	1480	2
		134-238	1480	3 - 4
2000	PV200-350	84-115	1480	2
		126-230	1480	3 - 4
1500	PV200-350	131-171	1760	2
2000	PV200-350	125-165	1760	2
2000	PV225-400	117-153	1480	2
		176-306	1480	3 - 4
2500	PV225-400	114-149	1480	2
		171-298	1480	3 - 4
3000	PV250-400	127-137	1480	2
		190-206	1480	3
		254-275	1480	4
3500	PV250-400	123-135	1480	2
		185-202	1480	3
		246-270	1480	4
4000	PV250-400	118-130	1480	2
		178-195	1480	3
		237-260	1480	4

Rated Capacity (gpm)	Model Dsg	Rated Net Pressure Range (psi)	Approx Speed (rpm)	Number of Stages
4000	PV275-430	66-78	1480	1
		133-156	1480	2
		199-234	1480	3
4500	PV275-430	64-76	1480	1
		129-152	1480	2
		193-229	1480	3
5000	PV275-430	62-74	1480	1
		124-147	1480	2
		186-221	1480	3

CENTRIFUGAL FIRE PUMPS SPLIT-CASE TYPE

Engineered for rugged Reliable service



PS SERIES

Overview

As the heart of water and foam fire-fighting system, the fire pump supplies the power for moving liquid. It has the characteristic or being very dependable and working intermittently with flat performance curve.

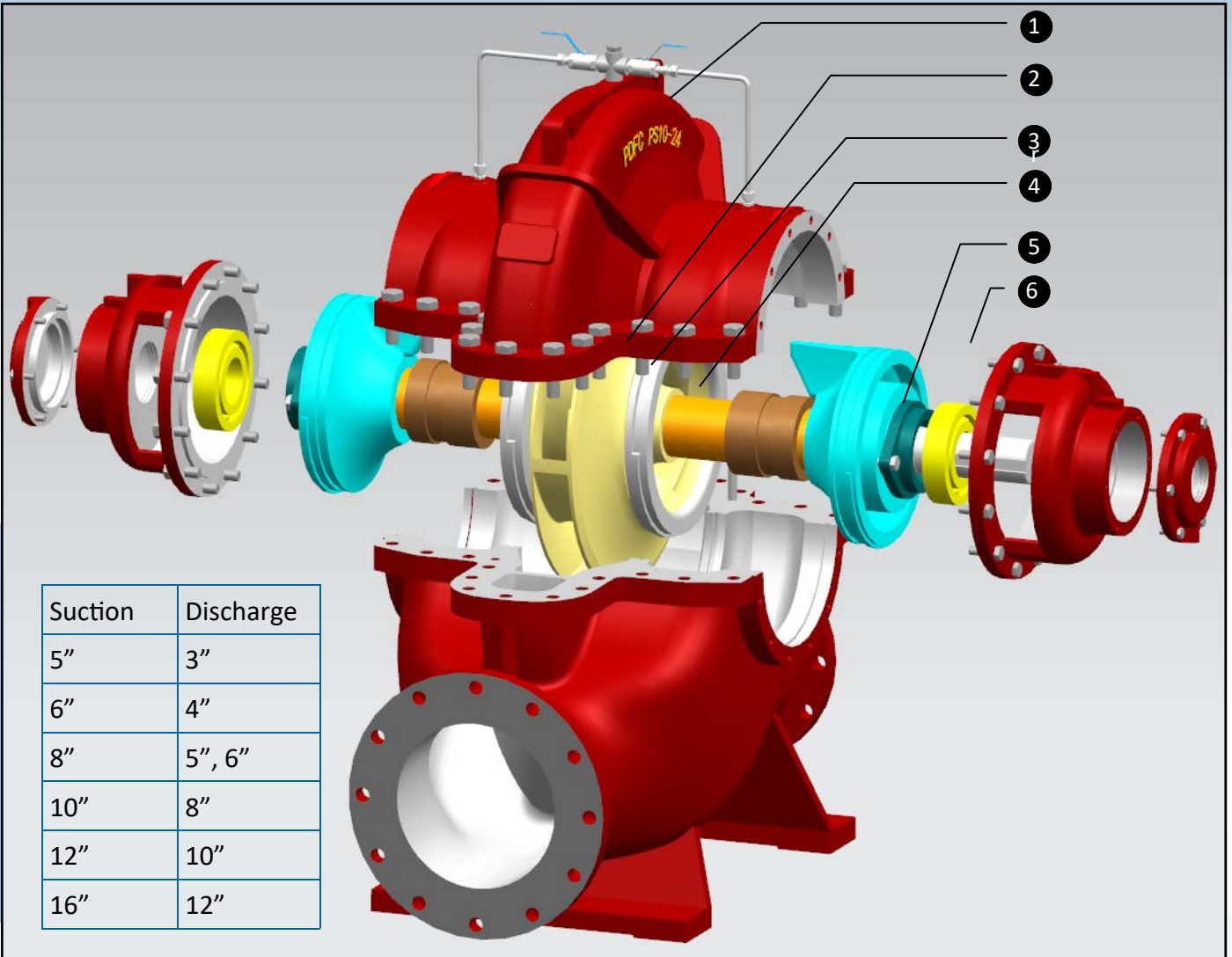
Design Standards

- FM 1311
- NFPA 20
- UL 448
- GB 6245

Features

- Max. flow is 33,000LPM (8,800GPM)
- Max. pressure is 25BAR(360PSI)
- Stainless Steel or Bronze for seawater applications
- Max. diesel or electric power drive:1600KW(2144HP)

Pump Structure



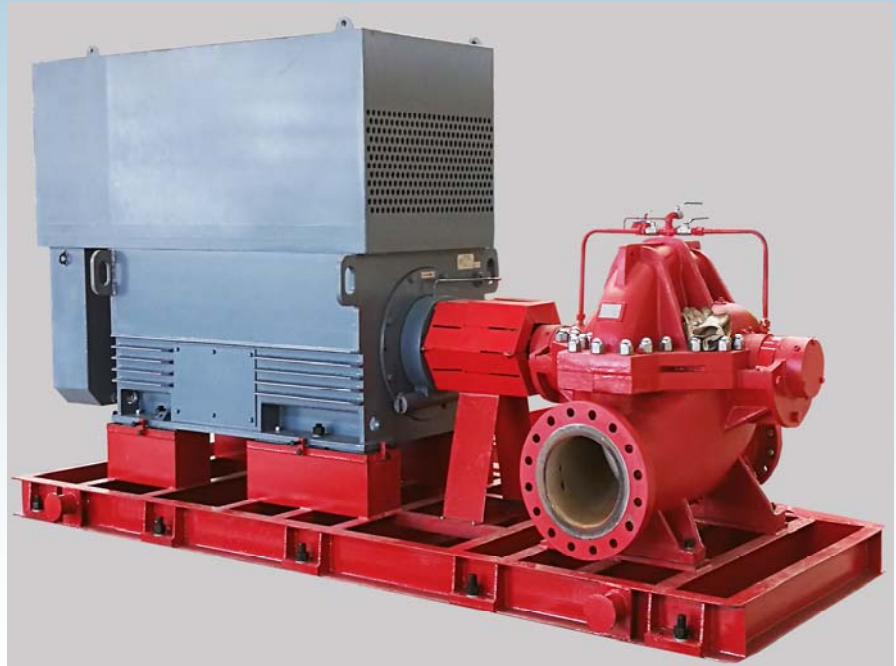
No.	Part Name	Material
1	Pump casing	Ductile Iron, Stainless Steel, Brass
2	Double intake impeller	Silicon Brass, Stainless steel
3	Wear ring	Bronze
4	Shaft sleeve	Stainless steel
5	Shaft	Stainless steel
6	Bearing house	Cast Iron, Stainless steel

Fire Pump Configuration

Electric Motor Driven

PDFC fire water pumps are available in electrical motor driven configurations, coupled to motors using a flexible coupling.

The unit is assembled on a compact steel skid, factory aligned and comes with all necessary accessories.



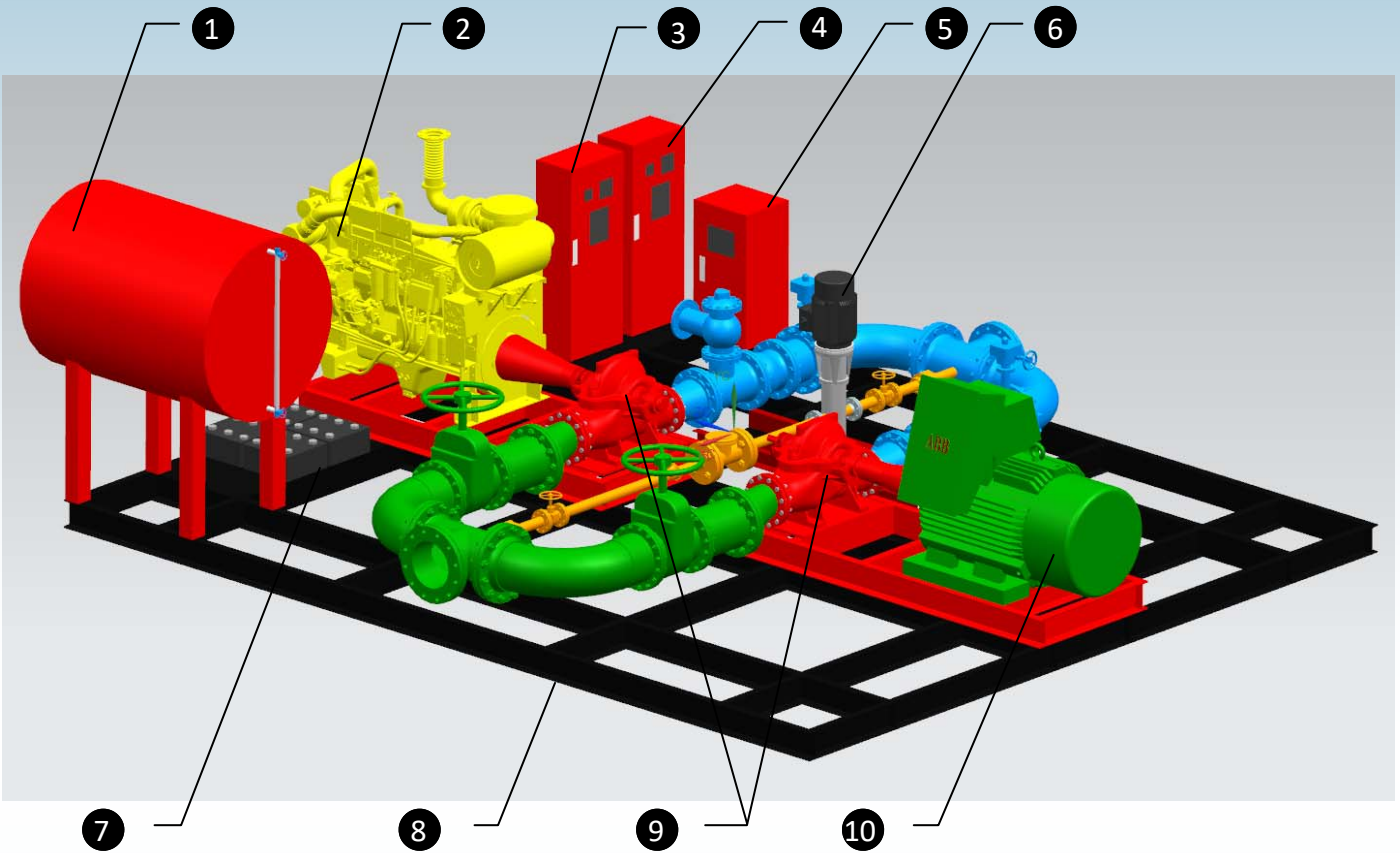
Diesel Engine Driven

PDFC fire water pumps are available in diesel engine driven configurations, coupled to diesel engines using a flexible coupling.

The unit is assembled on a compact steel skid, factory aligned and comes with water cooled or radiators with fan available, with air cleaner intake, exhaust system, fuel tank, batteries, etc., which are standard equipment.



Packaged Fire Pump skid



PS SERIES

No	Part Name	No	Part Name
1	Fuel Tank	6	Jockey Pump
2	Diesel Engine (895kW/1200HP)	7	Batteries
3	Control Panel For Diesel Engine Driven Pump	8	Multiples Bolted Compact Steel Skid
4	Control Panel For Motor Driven Pump	9	Two Fire Pumps
5	Control Panel For Jockey Pump	10	Electric Motor (710kW/950HP)

CERTIFICATE OF COMPLIANCE

Certificate Number EX28171
Report Reference EX28171-20191218
Issue Date 2019-DECEMBER-26

Issued to: Shanghai Pudong Special Firefighting Equipment Co Ltd
Room 205, Build 5, No. 398, Shuanglian Road, Qingpu
District
Shanghai
201702 CHINA

This certificate confirms that representative samples of CENTRIFUGAL FIRE PUMPS, SPLIT CASE
Centrifugal Fire Pumps, Split Case
PS150-300, PS150-340, PS200-470, PS200-550

Have been investigated by UL in accordance with the Standard(s) indicated on this Certificate.

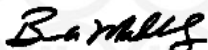
Standard(s) for Safety: UL448 - Standard for Centrifugal Fire Pumps for Fire Protection Service

Additional Information: See the UL Online Certifications Directory at <https://iq.ulprospector.com> for additional information.

This *Certificate of Compliance* does not provide authorization to apply the UL Mark. Only the UL Follow-Up Services Procedure provides authorization to apply the UL Mark.

Only those products bearing the UL Mark should be considered as being UL Certified and covered under UL's Follow-Up Services.

Look for the UL Certification Mark on the product.



Bruce Mahrenholz, Director North American Certification Program
UL LLC

Any information and documentation involving UL Mark services are provided on behalf of UL LLC (UL) or any authorized licensee of UL. For questions, please contact a local UL Customer Service Representative at <http://ul.com/aboutul/locations/>



DESCRIPTION

PRODUCT COVERED:

USL -Centrifugal Fire Pumps, Split Case

Rated Capacity	Size,	Model Designation	Rated Net Pressure Range,	Approx. Speed,	Maximum Working Pressure,			
GPM (US)	inches		PSI	RPM	PSI			
750	8X6	PS150-300	88 - 136	2600	330			
1000			84 - 133					
1250			77 - 127					
750			94 - 159	2800				
1000			89 - 155					
1250			82 - 149					
750			107 - 178	2950				
1000			101 - 174					
1250			94 - 168					
1500			161	3550				
1000			151 - 255					
1250			145 - 250					
1500			135 - 243					
750			8X6	PS150-340		121 - 178	2600	306
1000						116 - 174		
1250	110 - 168							
1500	161	2800						
750	123 - 208							
1000	119 - 203							
1250	130 - 198	2950						
1500	120 - 190							
750	121 - 231							
1000	117 - 226							
1250	125 - 221							
1500	114 - 214							
2000	10X8	PS200-470			78 - 107	1460	246	
2500					78 - 100	1770		
2000					99 - 160			
2500			99 - 154	1900				
3000			122 - 147					
2000			105 - 171					
2500			108 - 164					
3000			135 - 157					
2000	10X8	PS200-550	96 - 153	1460	303			
2500			94 - 149					
3000			103 - 143					
2000			138 - 228	1770				
2500			147 - 223					
3000			140 - 218					