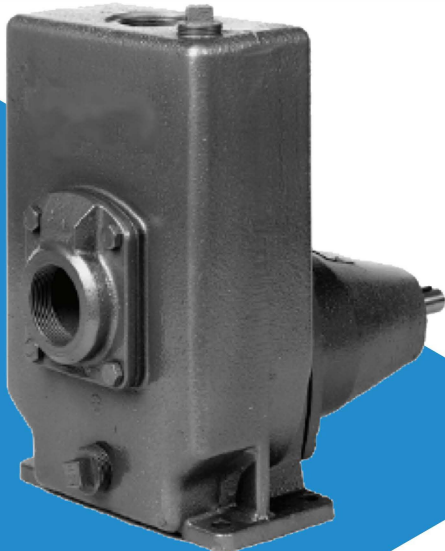


SPK & SPF Self-Priming Centrifugal Pump

SPK & SPF pumps are self-priming centrifugal pumps with radial (semi-open or closed) impeller, overhung mounted on a bearing pedestal. SPK/F are designed for pumping clear or dirty and low viscosity liquids with

solids. If a spacer type coupling is used, the pump can easily be dismantled without it being necessary to disturb the piping or to move the motor. Self-priming with suction lift up to 7.5 meter.



SPK Pump

Application

General: Draining of car park, swimming pool and local flood

Marine: Ballast, bilge, firefighting, engine cooling and fuel oil transfer

Industrial: Transfer, circulation and booster of all kind of liquids (Chemical, solvent, oil and water)

Environment protection: Waste water, filtered sewage and effluent

Waste treatment: Filtered sewage, activated sludge

Construction: Draining and drying of construction site

Operating Data

Capacity : 100m³/hr

Head (Max.) : 70 meter

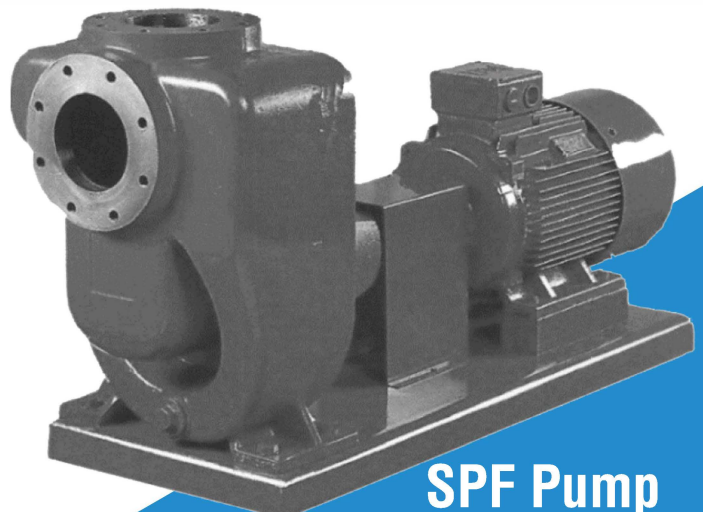
Temp (Max.) : 95oC

Operating Pressure : 10 bar

Features

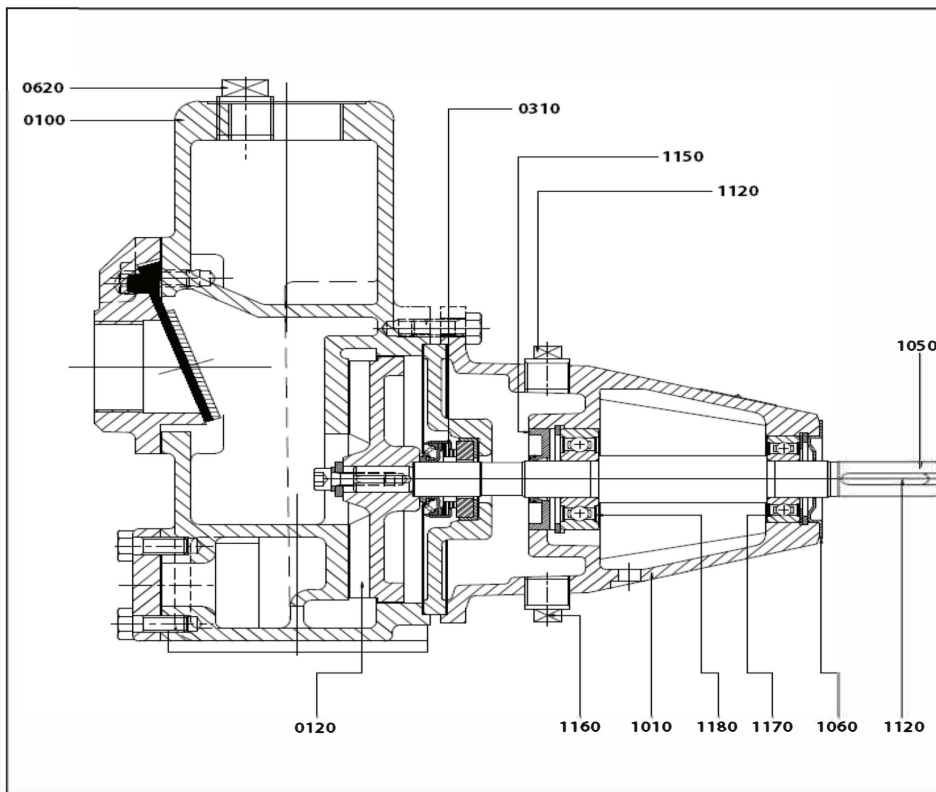
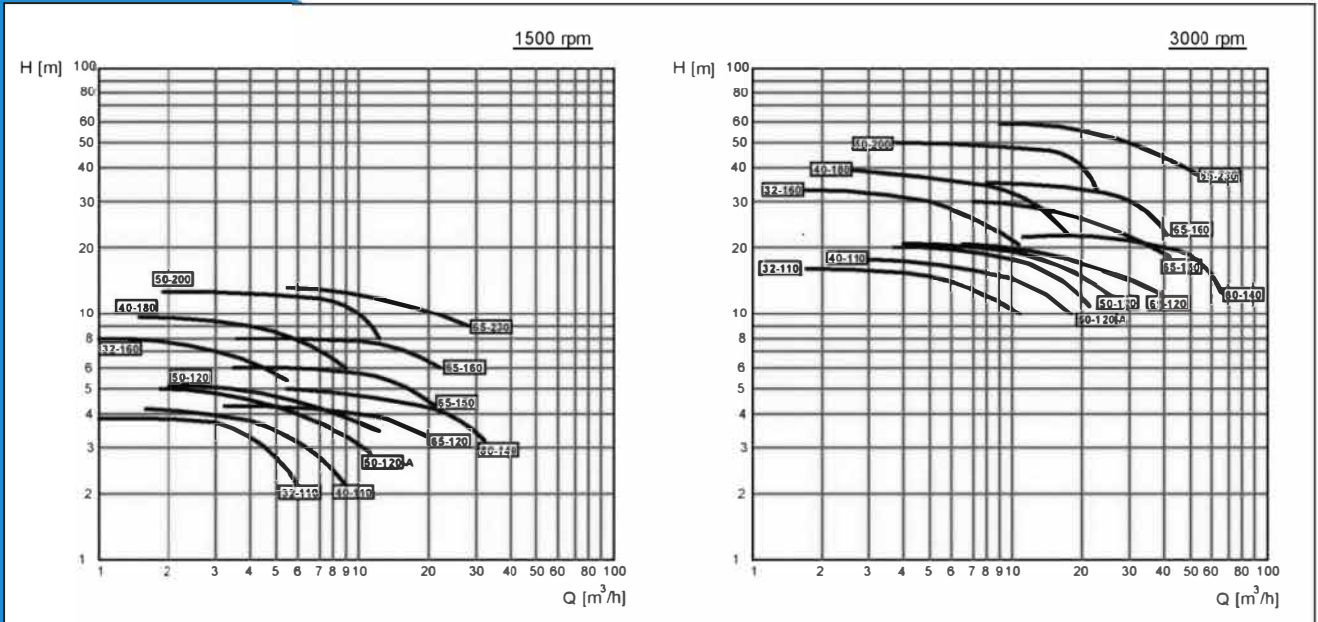
- **Pump casing:** Centerlined discharge & self-venting. Back pull-out for easy dismantling of pump.
- **Impeller:** Semi open impellers can handle liquid with suspend solid up to 20mm.
- **Shaft seals:** All pumps are equipped with externally lubricated seal. Lubrication prevents damage to seal during dry running.
- **Bearing assembly:** Dust tight, grease lubricated bearings, maintenance free.
- **Wide range of material:** Standard materials are cast iron. Bronze, stainless steel and duplex are optional.

Pump Casing	Cast Iron	Cast Iron	Stainless Steel
Impeller	Cast Iron	Bronze	Stainless Steel
Mechanical Seal	Carbon to Ceramic		
Pump Shaft	17% Chrome Steel		
<i>Other material upon request.</i>			



SPF Pump

Performance Curve



Sectional Drawing

Item	Qty	Description	Material	Item	Qty	Description	Material
0100	1	Pump Casing	Cast Iron/SS	1120	1	Key	Steel
0120	1	Impeller	Bronze/SS/CI	1150	1	Lip Seal	NBR
0310	1	Seal Ring	Carbon	1160	1	Drain Plug	Steel
0620	1	Plug	Steel	1170	1	Ball bearing	Steel
1010	1	Bearing Housing	Cast Iron	1180	1	Ball bearing	Steel
1050	1	Pump Shaft	Stainless Steel	1200	1	Plug	Polypropylene
1060	1	Bearing Cover	Steel				