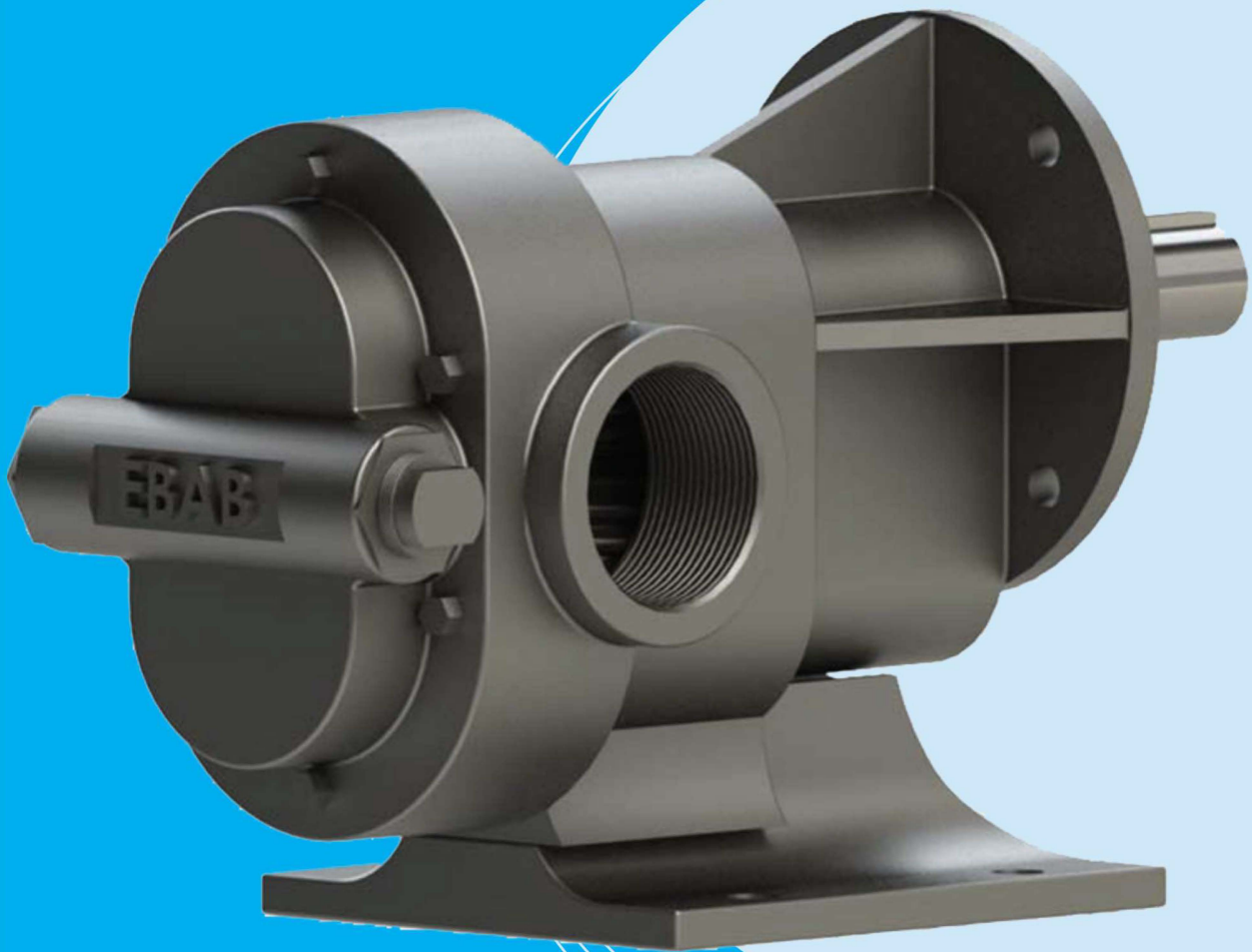


# GX SERIES

## Rotary Gear Pump



*SIZE FROM 1/2" TO 3", CAPACITY UP TO 680 LPM*

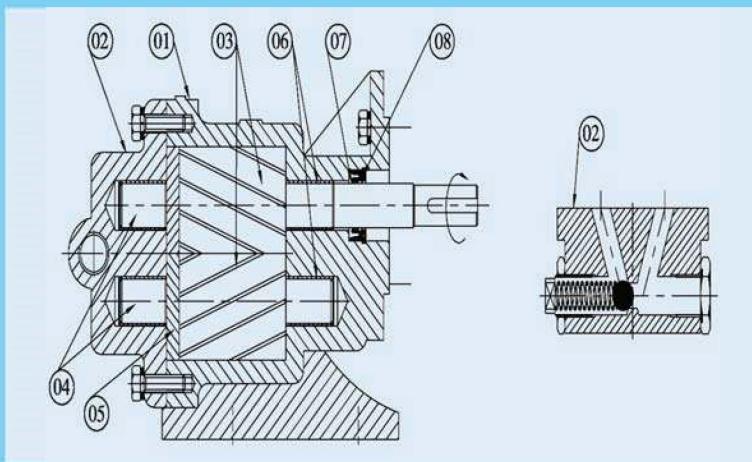
*PRESSURE UP TO 11 BAR, VISCOSITY ~10,000CST*

*TEMPERATURE UP TO 90 OC, DRIVE SPEED UP TO 1800 RPM*

# GX SERIES

EBAB rotary pump type "GX" is a self-priming 'bidirectional' positive displacement gear pump in simple two piece cast iron construction with single helical modified profile carbon steel gears shrunk fitted on alloy steel hardened and ground shaft as impeller firmly supported on 4 nos of self-lubricated bush bearing. The motorized pumpset in mono-block design ensures perfect alignment, save space & reduces down time.

**Gear:** A pair of herringbone gear fitted on hardened & ground shaft with shaft sleeves in floating design supported on either side on needle / bush bearings located on end covers with wearing plate packed in between and placed inside close tolerance accurately machined casing. The rigid design of the gears and houses allow for very high pressures and the ability to pump highly viscous fluids. Unlike with a centrifugal pump, a gear pump's output is loosely independent of discharge pressure altogether.



**Lubrication:** Self lubricating using the pumped liquid.

**Inlet/Outlet:** All GX pumps are provided with BSP thread.

**Rotation:** The pump can be run in either direction with change in inlet-outlet port position.

**Relief Valve:** The relief valve operation can be reversed by simply changing the R.V. parts on the opposite side.

**Application:** Due to compact & simple design, this pump are ideally suitable for handling viscous & semi-viscous liquids such as fuel oil, lube oil LSHS, Mineral oils, trans former oil, LDO, paints, varnish, glycerin, soap, sugar solutions & molasses.

PART LIST			
SR.	ITEM	QTY	MATERIAL
1	Pump Body	1	Cast Iron
2	Back Cover with R.V.	1	Cast Iron
3	Gear ( Rotor, Stator )	2	AISI 1045
4	Shaft ( Rotor, Stator )	2	AISI 1055 Hardened & ground
5	Wearing Plate	2	Cast Iron
6	Bush	4	Bronze / Graphite
7	Sealing	1	Lip Seal / Mech. Seal
8	Circlip	1	Steel

Pump Model	Inlet Outlet Port Size 'BSP'	Capacity At 1500 RPM			Power Consumption in BHP at Differential Pressure of 'X' Kg/cm <sup>2</sup> at 1500 SSU Viscosity									
		LPM	M <sup>3</sup> /HR	US GPM	'X'→ 1	2	3	4	5	6	7	8	9	10
GX-050	½" x ½"	15	0.9	4.0	0.30	0.35	0.40	0.45	0.50	0.55	0.60	0.65	0.70	0.75
GX-075	¾" x ¾"	30	1.8	7.9	0.37	0.45	0.54	0.62	0.69	0.77	0.85	0.92	1.01	1.09
GX-100	1" x 1"	50	3.0	13.2	0.40	0.50	0.60	0.75	0.89	1.04	1.17	1.30	1.46	1.59
GX-150	1 ½" x 1 ½"	110	6.6	29.0	1.05	1.45	1.95	2.10	2.40	2.65	2.95	3.25	3.60	4.00
GX-200	2" x 2"	225	13.5	59.4	2.00	2.50	3.20	3.75	4.30	4.55	5.60	6.20	6.90	11.7
GX-250	2 ½" x 2 ½"	350	21.0	92.4	4.15	5.20	6.10	7.30	8.20	9.1	10.3	11.20	12.10	13.00
GX-300	3" x 3"	500	30.0	132.0	5.80	7.00	8.20	9.40	10.60	11.80	13.00	14.20	15.40	16.60

**Distributor :** Inno Engineered Products Pte Ltd