

# FIMARS

METERING PUMPS



FR  
Series

## API 675 PUMPS CATALOGUE



WE  
CARE  
ABOUT  
YOUR  
METERING  
NEEDS

Via Bagutti 5  
6900 Lugano CH  
info@fimars.com  
www.fimars.com  
Tel +41 912103529  
Fax +41 912103530  
Mob +41 779742863

FIMARS SA



## API 675 PUMP SERIES

### ● Technical Features

#### ◆ Performances:

Flow rate up to 12000 l/h with single pump head  
Pressure up to 950 bar  
Metering accuracy reaches 1%  
Full API 675 compliant

#### ◆ Features:

Integrated "Oude" worm gear pair, low noise, high transmission efficiency, large torque  
Low maintenance, long service life  
Plunger and hydraulic diaphragm design  
Built-in relief valve, compensating valve and limit valve  
Single and double diaphragm, PTFE or metallic made with rupture indicator

#### ◆ Adjustment:

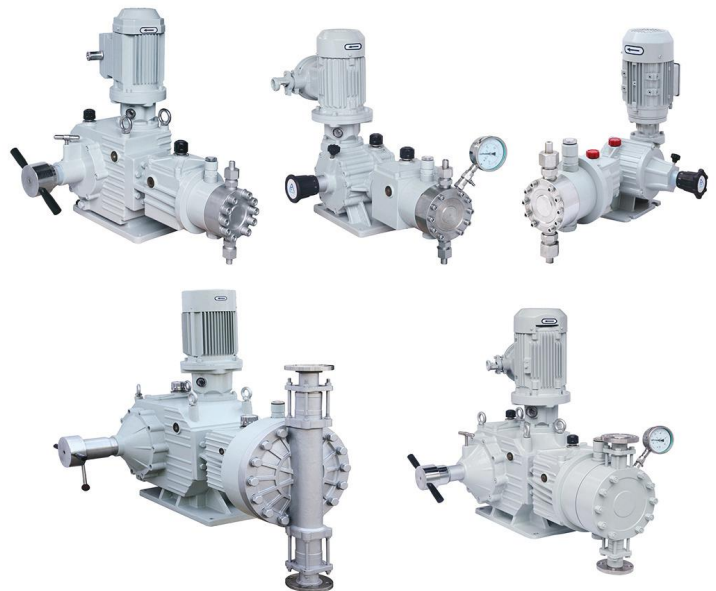
0-100% stepless adjustment of flow  
Frequency conversion option

#### ◆ Materials:

Cast iron or anodized cast iron casing  
Various liquid end executions: SS 304L, SS 316L, Hastelloy C, PVC, PVDF, PTFE...

#### ◆ Customized solutions:

Explosion proof motors  
Special motors  
UNI/ANSI flanges  
High viscosity solutions



HYDRAULIC DIAPHRAGM METERING PUMP OR PLUNGER PUMP — API 675 COMPLIANT

## API 675 PUMP SERIES

**FIMARS**  
METERING PUMPS

### ● FRWA Pump Series

Type	Flow Rate L/h	Motor	
		0.37kW Max Pressure bar	0.55kW
<b>FRWA</b>	0.3	900	
	1.5	600	
	3	380	
	5	270	
	9	170	
	14	120	
	16	100	
	27	63	
	40	44	
	55	32	
	75	25	
	95	20	
	120	16	20
	150	12	16
	170	11	17
210	9	14	

## FRWA Pump Series



HYDRAULIC DIAPHRAGM METERING PUMP OR PLUNGER PUMP – API 675 COMPLIANT

## API 675 PUMP SERIES

**FIMARS**  
METERING PUMPS

### ● FRXAA Pump Series

Type	Flow Rate L/h	Motor		
		0.55kW Max Pressure bar	0.75kW	1.5kW
<b>FRXAA</b>	7.5	220	310	620
	15	150	220	440
	25	100	140	280
	40	71	98	190
	50	57	80	150
	85	37	51	100
	125	25	35	71
	175	19	26	52
	225	14	20	40
	285	11	16	31
	355	9	13	25
	430	8	11	21
	520	6	9	18
	610	5.4	8	15
	700	4.5	6	13
	810	4	5	11

## FRXAA Pump Series



HYDRAULIC DIAPHRAGM METERING PUMP OR PLUNGER PUMP – API 675 COMPLIANT

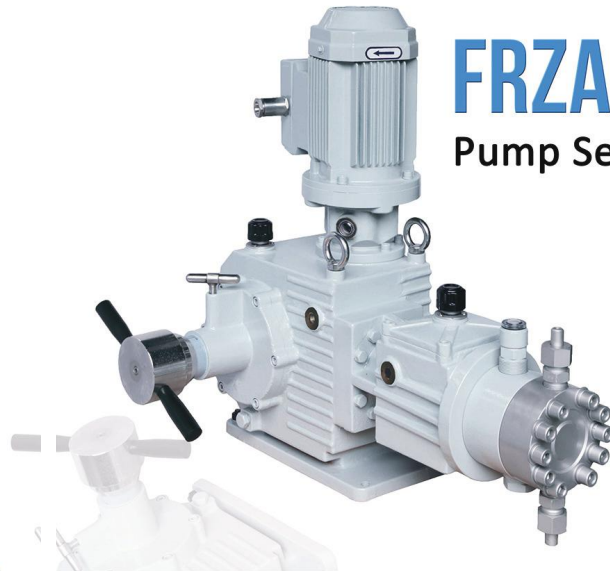
## API 675 PUMP SERIES

**FIMARS**  
METERING PUMPS

### ● FRZA Pump Series

Type	Flow Rate L/h	Motor		
		1.5kW	2.2kW	3kW
Max Pressure bar				
28	370	520	720	
45	260	370	500	
60	210	300	400	
80	170	250	330	
105	130	190	250	
160	62	88	110	
220	46	64	81	
295	35	49	62	
380	28	39	49	
470	22	32	40	
570	19	26	33	
680	16	22	28	
800	13	19	24	
930	11	16	20	
1080	10	14	18	
1230	9	12	16	
1390	8	11	14	
1560	7	10	12	
1740	6	9	11	
1930	5	8	10	

**FRZA**



**FRZA**  
Pump Series

HYDRAULIC DIAPHRAGM METERING PUMP OR PLUNGER PUMP – API 675 COMPLIANT

## API 675 PUMP SERIES

**FIMARS**  
METERING PUMPS

### ● FRZAA Pump Series

Type	Flow Rate L/h	Motor			
		2.2kW	3kW	4kW	5.5kW
Max Pressure bar					
55	220	310	400	470	
75	180	250	330	380	
90	150	210	270	320	
115	110	150	200	240	
185	79	110	140	170	
260	58	81	100	120	
355	45	62	81	96	
460	35	49	64	75	
580	29	40	52	61	
700	24	33	43	51	
840	20	28	36	42	
990	17	24	31	36	
1160	15	20	27	31	
1340	13	18	23	27	
1530	11	16	20	24	
1730	10	14	18	21	
1940	9	12	16	19	
2170	8	11	14	17	
2410	7	10	13	15	
2660	6.5	9	12	14	
2920	5.8	8.2	11	13	
3190	5	7.5	10	12	
3480	4.5	7	9	11	
3780	4	6	8	10	

**FRZAA**



**FRZAA**  
Pump Series

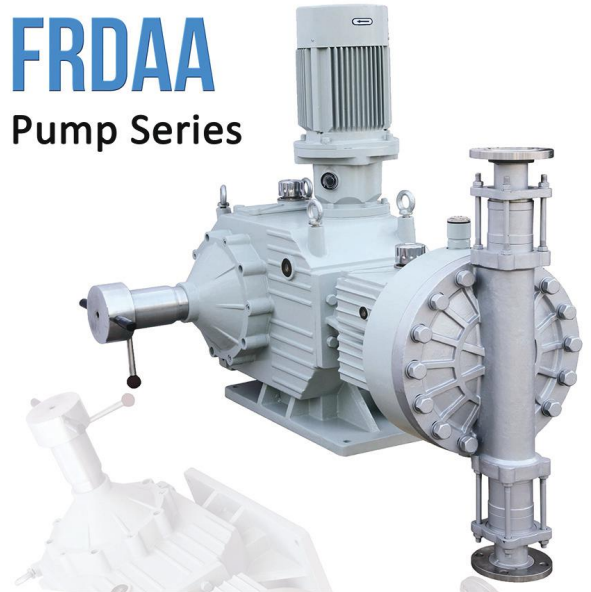
HYDRAULIC DIAPHRAGM METERING PUMP OR PLUNGER PUMP – API 675 COMPLIANT

# API 675 PUMP SERIES

● **FRDAA Pump Series**

Type	Flow Rate L/h	Motor		
		7.5kW	11kW	15kW
Max Pressure bar				
<b>FRDAA</b>	160	500	800	950
	230	350	550	700
	310	290	400	580
	410	220	320	440
	510	160	230	320
	645	140	200	280
	780	110	170	220
	930	95	140	190
	1090	84	120	168
	1260	73	106	146
	1450	63	90	125
	1650	55	80	110
	1860	49	72	95
	2100	43	64	85
	2350	39	57	75
	2600	35	51	70
	2850	32	47	64
	3150	29	42	58
	3450	26	39	53
	3760	24	35	48
	3900	23	34	46
	4080	22	33	44
	4300	21	31	42
	4400	20	30	40
	4750	19	28	38
	5100	18	26	36
	5640	16	23	32
	6120	15	22	30
	6600	14	20	28
	7140	13	18.5	26
7600	12	17.5	24	
8140	11	16.5	22	
8710	10	15	20	

## FRDAA Pump Series

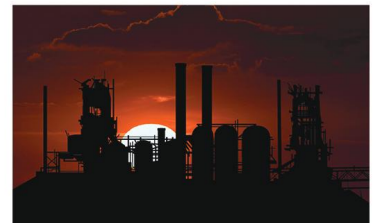


**HYDRAULIC DIAPHRAGM METERING PUMP  
OR PLUNGER PUMP – API 675 COMPLIANT**

# API 675 PUMP SERIES

● **Application Fields**

- ◆ **Oil & Gas:**  
 Hydrogen sulfide and carbon dioxide injection  
 Disposal of hydrocarbon condensate  
 Glycol injection  
 Methanol injection  
 Injection of corrosion inhibitors
- ◆ **Refineries:**  
 Chemical injection of high pressure cleaning  
 Amine treatment  
 Biofuel production
- ◆ **Petrochemicals:**  
 Wet oxidation of waste water  
 Polyethylene production
- ◆ **Gas odorization**
- ◆ **Plastics industry:**  
 Foaming agent metering  
 Additive metering  
 Melamine metering  
 Polyurethane production



**HYDRAULIC DIAPHRAGM METERING PUMP OR PLUNGER PUMP – API 675 COMPLIANT**